



PATRICK HIGHSMITH
DIRECTOR AND ECONOMIC GEOLOGIST

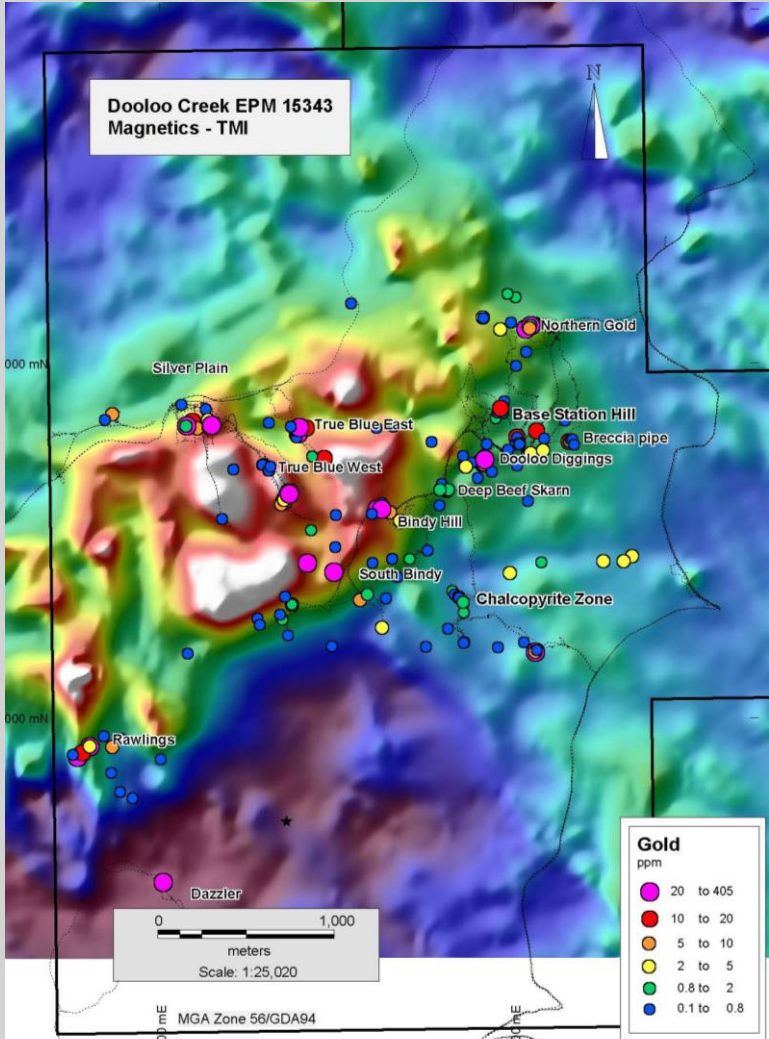
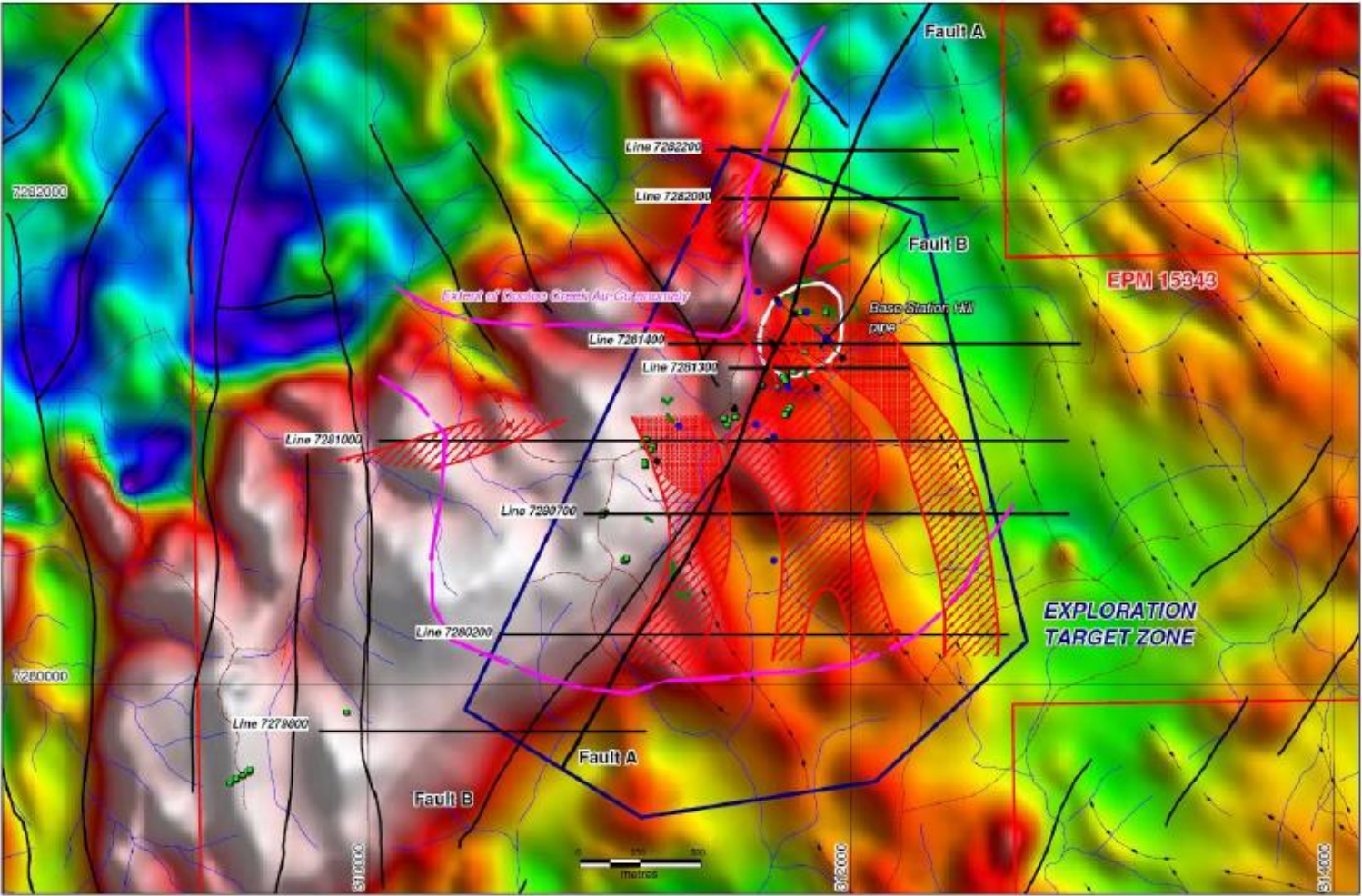
Dooloo Creek Project: Target and Objective

- Devonian aged volcanic arcs are priority terranes for gold and copper around the world
- One of the best gold systems of this age occurs in Queensland: Mt. Morgan Mine
 - Devonian aged “volcanogenic” deposit
 - Produced 8M oz of gold and +361K tonnes of copper
 - Average grades of 4.75 g/t Au and 0.72% Cu
 - A hybrid type deposit: elements of VMS and epithermal systems
- This part of Queensland is also host to younger (Permian-Triassic) porphyry copper type systems
 - Generally considered to be sub-economic or less attractive as a target
- Dooloo Creek has Devonian volcanics and potentially the younger Permo-Triassic rocks as well; the structures and porphyry copper influence may crosscut earlier Devonian mineralization
- GGR’s focus has been on higher-grade styles of mineralization, but porphyry or intrusion-related deposits are also substantive targets

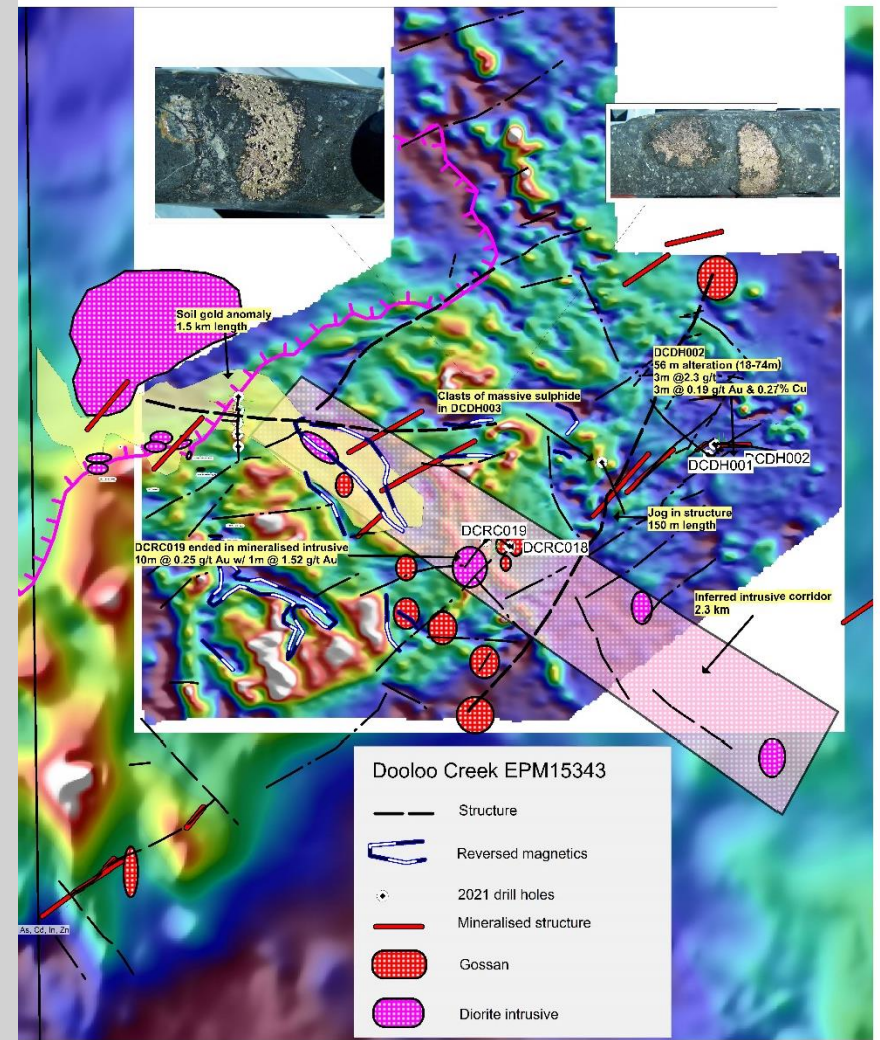
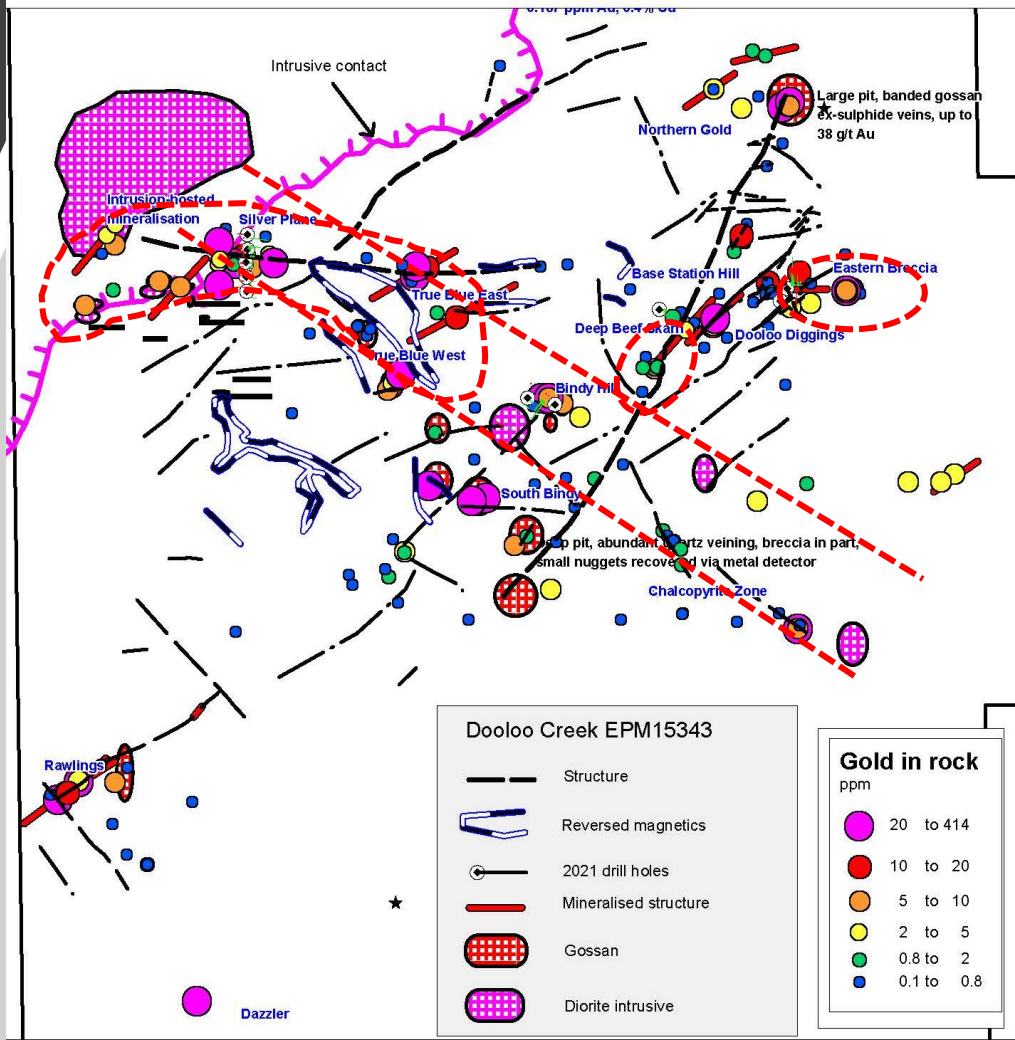
Dooloo Creek Project: Summary of Field Work

- Considerable work accomplished at Dooloo Creek during the first 18 months:
 - Rock Samples: 195
 - Soil Samples: 510
 - Detailed magnetics
 - Induced polarization
 - Drilling:
 - 1,840m of Reverse Circulation (8 holes)
 - 1,078m of Diamond Core (3 holes)
 - Downhole electromagnetics
- Best drill results:
 - 2m at 3.9 g/t Au (Silver Plane)
 - 3m at 2.3 g/t Au (Eastern Breccia)
 - Anomalous gold and copper in all 11 holes
 - Significant thicknesses of alteration in eastern part of district (up to 46m)

Dooloo Creek: Big Picture Targets

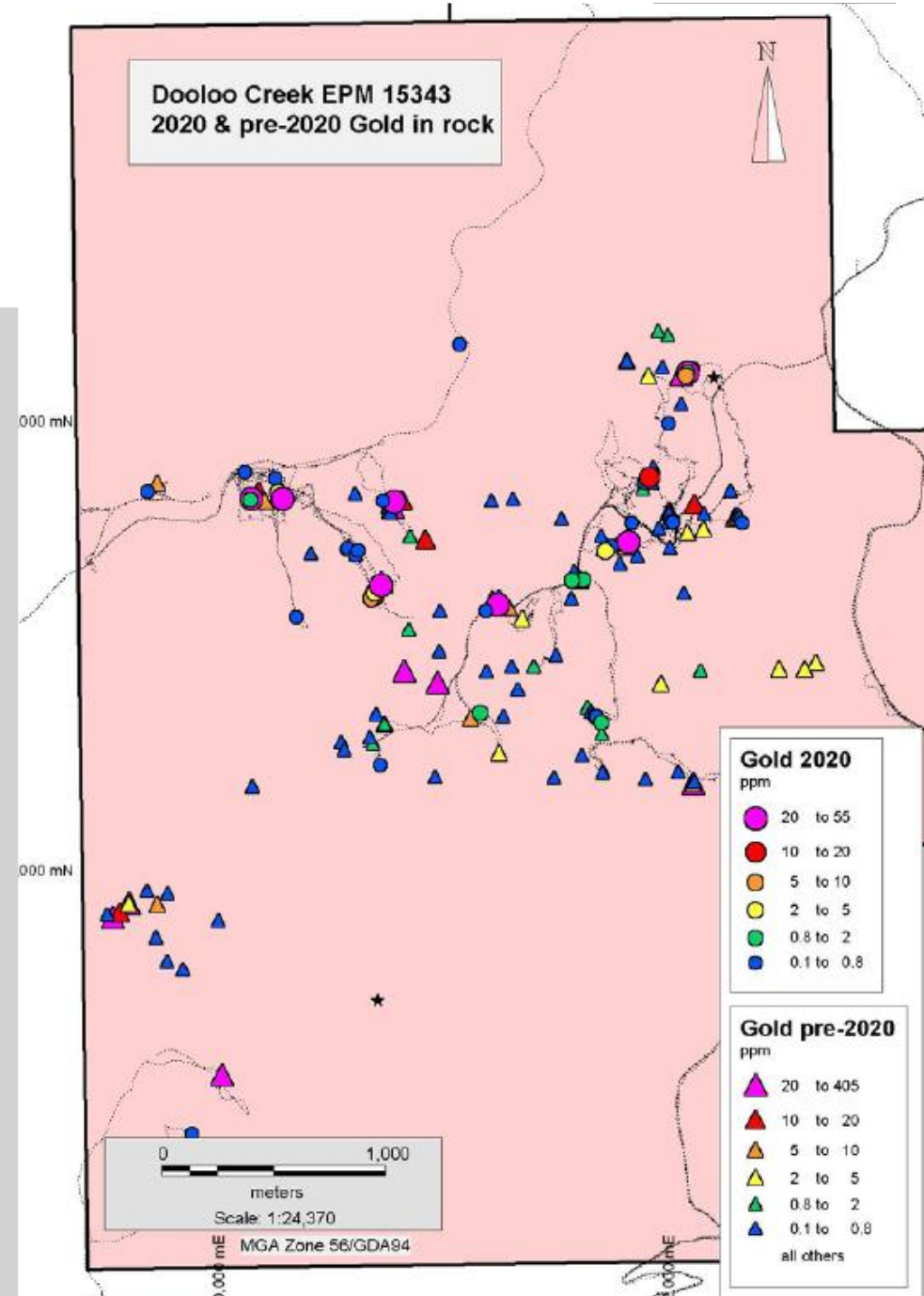


Dooloo Creek: Active Targets

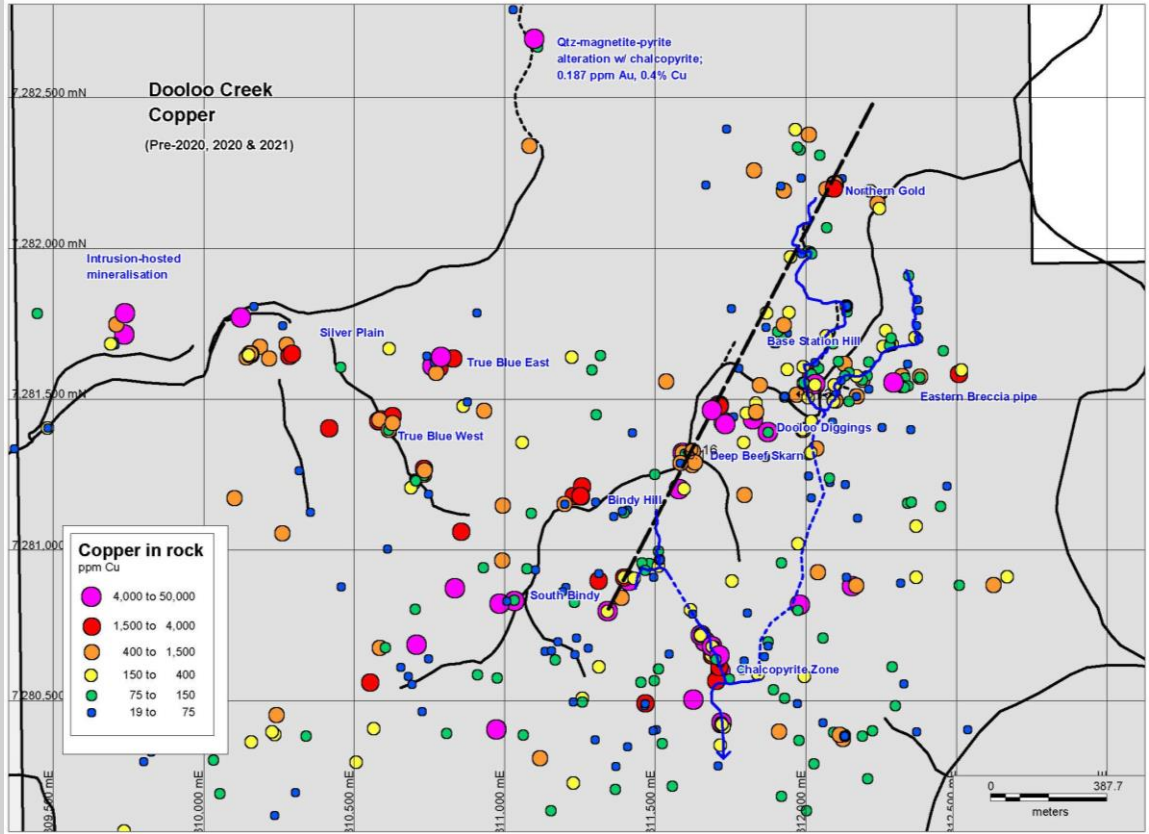
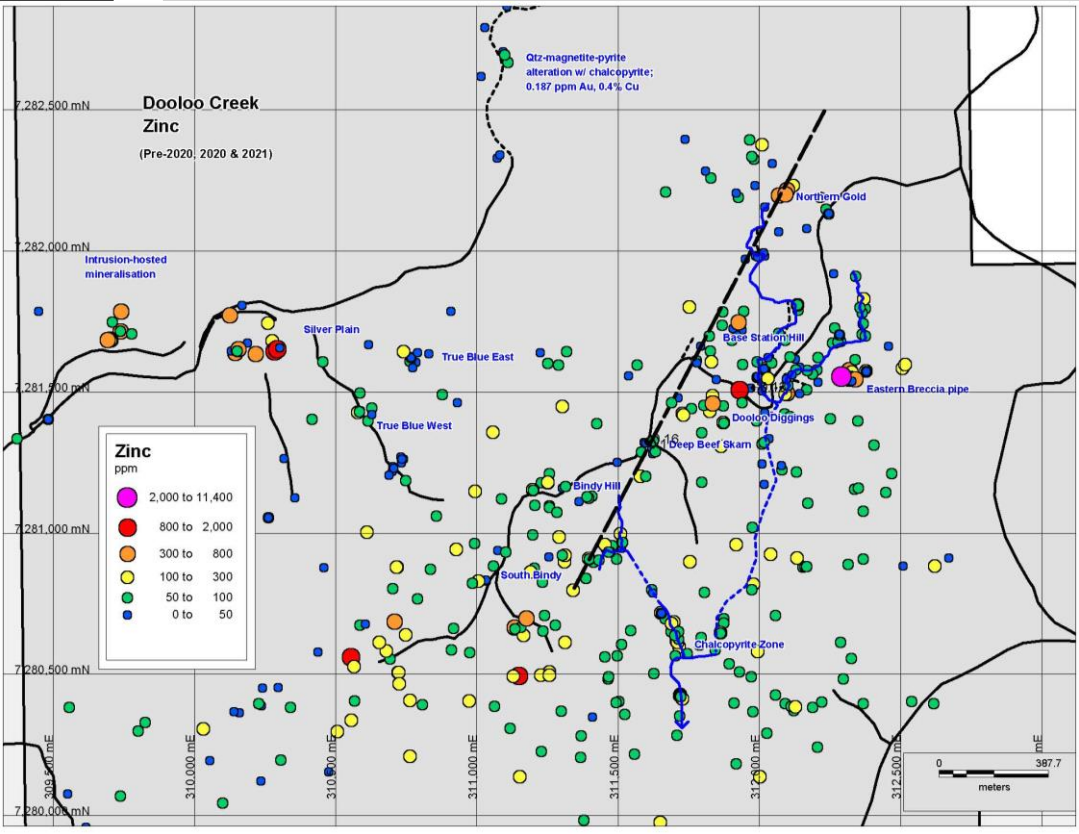


Dooloo Creek: Geochemistry

- Significant geochemical anomalies in Au, Cu, Pb, Zn, Bi, As, Te, and other elements highlight localized enrichment and may be linked to large scale zonation
- Gold is most elevated away from the large breccia pipes and areas of historic focus
 - 20 to 55 g/t at Silver Plane and True Blue
 - 20+ g/t at Eastern Breccia and Bindy Hill
 - Historic sampling of +100 g/t farther southeast at Dazzler and Rawlings
 - Highest values often associated with Bi and Te
- Copper is more scattered, highly elevated at Silver Plane and True Blue, as well as the historic sampling at Deep Beef Skarn and Chalcopyrite Zone
- Zinc and lead are more concentrated in the eastern part of the district – possible zonation into the cooler zones.



Dooloo Creek: Geochemistry



Dooloo Creek Project: Summary

- We have confirmed the presence of significant Au and Cu in the Devonian rocks by first pass drilling, large-scale rock sampling, and robust anomalies in prospect-scale soil sampling
- Targets have emerged that warrant follow-up soil sampling, mapping, rock sampling, and possibly detailed geophysics
- The team will be proceeding with a structural geology interpretation exercise to help prioritize the numerous targets
- We intend to drill during late Q2 and Q3, and the preliminary list of likely targets includes:
 - True Blue – Silver Plane corridor
 - Structural/intrusive targets near Bindy Hill
 - Eastern Breccia
 - Northern Gold
- The scale of the system at Dooloo Creek is uncommon for a junior exploration company at this stage: porphyry-scale zonation is suggested but the role of reduced intrusives (diorite) is also yet to be determined